

Coronavirus Emergency Relief Fund (CERF)

May 24, 2020 – Weekly Update

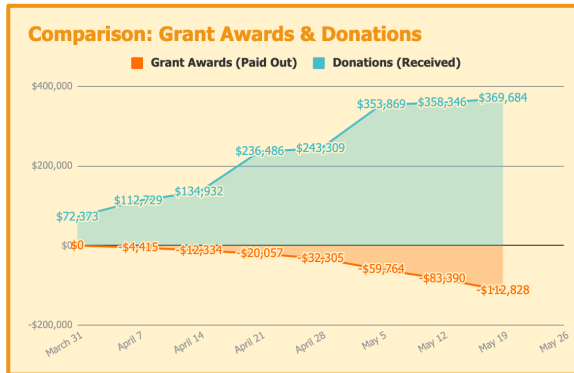


CERF ETHOS

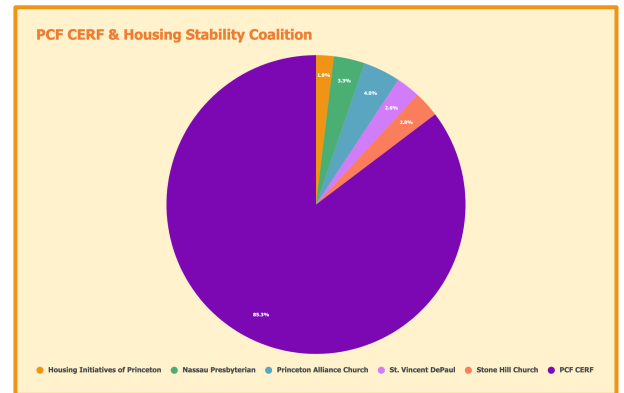
Our goal is for residents to be able to **stay in their homes** and to maintain access to utility service that enables **students to be connected to school** and enables **all residents to be connected to food resources** and other necessities during this crisis.

FUNDRAISING – \$400,824 as of May 24th

The CERF is supported in part with grants from the **Princeton University Relief Fund** and the **Covid-19 Relief & Recovery Fund** of **Princeton Area Community Foundation**. We are grateful to the University, to PACF, and to the over **750 donors** who have contributed.

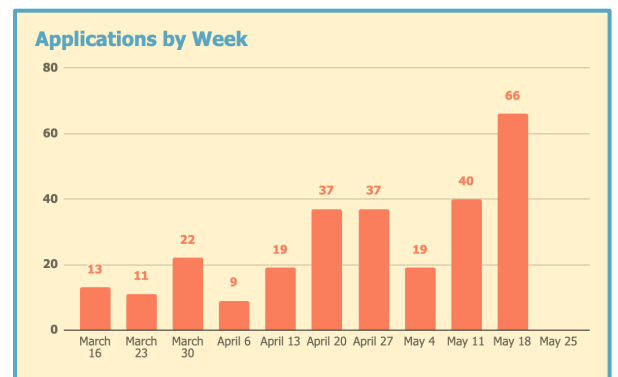
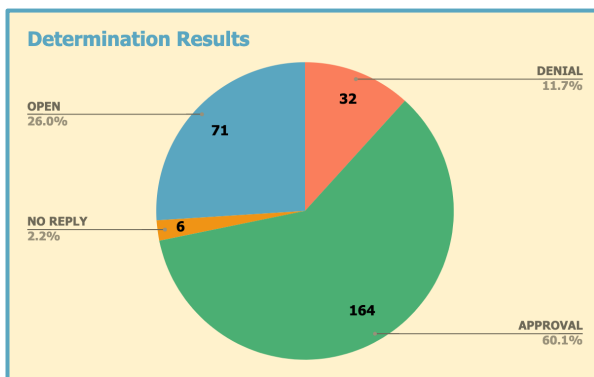


The **Housing Stability Coalition** has contributed almost **\$20,000** in addition to the \$112,828 awarded by CERF. They remain a much-appreciated partner in our mission!



APPLICATIONS – 273 as of May 24th

To date, we have been able to help **158 unique households** stay sheltered and connected to resources. Of the 273 applications received, 115 are renewals. The past two weeks have seen over 100 application submissions. The current average award rose again this week to **\$924.79**. At this award level and with our current funding, we will be able to help approximately 310 more applicants or times and have sufficient funding for 8 – 12 weeks.



REASONS TO H.O.P.E. (Help One Person Everyday)

As we Americans honor our fallen soldiers this **Memorial Day**, it's striking to realize that the current COVID-19 death toll exceeds the combined death toll from the wars in Korea and Vietnam. In fact, deaths from COVID-19 are rapidly approaching the numbers of Americans who died during World War I.



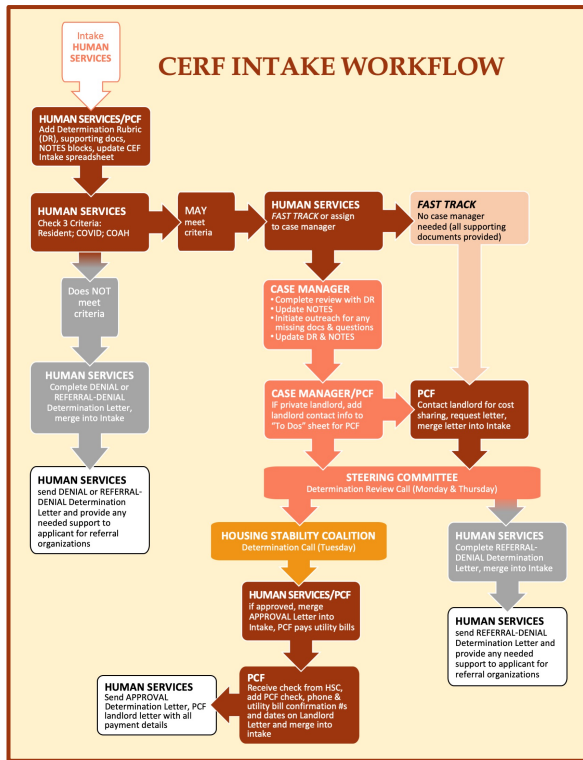
On that somber note, this week would like to acknowledge all of the medical staff and essential workers who are on the frontlines of the COVID-19 pandemic. They are helping far more than one person each day and continue to fight until a treatment or cure is found.



Coronavirus Emergency Relief Fund (CERF)

May 24, 2020 – Weekly Update

PROCESS



Applicants submit a request through the municipality’s privacy-compliant system or an intake coordinator completes the request with the applicant over the phone. The initial review is conducted by the Director of Human Services who ensures that: the applicant is a resident of Princeton; the request is COVID-related; and the applicant’s income falls under the COAH region 4 income limit for family size. If those 3 criteria are met, Human Services assigns the application to one of the case managers who comprise the **Steering Committee**.

The assigned case manager conducts an intake interview, collects any outstanding documentation, and then uses the CERF Determination Rubric to assess the application. Guidance and supervision for intakes is provided by the Director of Human Services and the President of Princeton Children’s Fund (PCF). PCF contacts the landlord to ask if they are able to share in the effort to keep tenants housed by forgiving a portion of the rent. Landlords who agree send a sharing letter to PCF.

The Steering Committee meets on Zoom (Mondays and Thursdays) and discusses determination recommendations. Cases that are approved by the Steering Committee are then presented to the Housing Stability Coalition where, upon approval, the HSC contributes 30% of the applicant’s rental request.

For approved applications, PCF receives Housing Stability Coalition checks, adds a PCF check for the remaining 70% of rent and sends payment to the landlord. PCF also contacts the utilities, monthly cell plan, etc. to make payments. Human Services sends the determination letter to the applicant and includes details of the landlord sharing (where applicable) along with check numbers and dates from rent payments, as well as utility payment confirmation numbers for applicants to retain in their records.

CERF TEAM

Intake Coordinators – this team answers the Human Services phone number and helps potential applicants navigate the application process.

- Katherine Cardona* – Princeton Recreation Department (PRD)
- Kimberly Figueroa-Martinez* – Human Services
- Sindy Sandoval* – Corner House

Steering Committee – in addition to processing intakes, members check to see if applicants have access to reliable sources of food and refer them to available resources when appropriate.

- Emily Becker* – friend of PCF
- Diane Paulsell* – Solidaridad Princeton
- Zoe D’Eugenio-Pinel* – friend of PCF
- Nicole Paulucci – PRD
- Andrea Dinan* – Princeton High School & PCF
- Trinidad Rodriguez* – JW Middle School & PCF
- Jordan Goodwin – Princeton Community Village
- Angie Vargas*/Cecilia Avila* – Arm in Arm
- Sharon Hurley – Princeton Senior Resource Center

* = dual-language speaker

